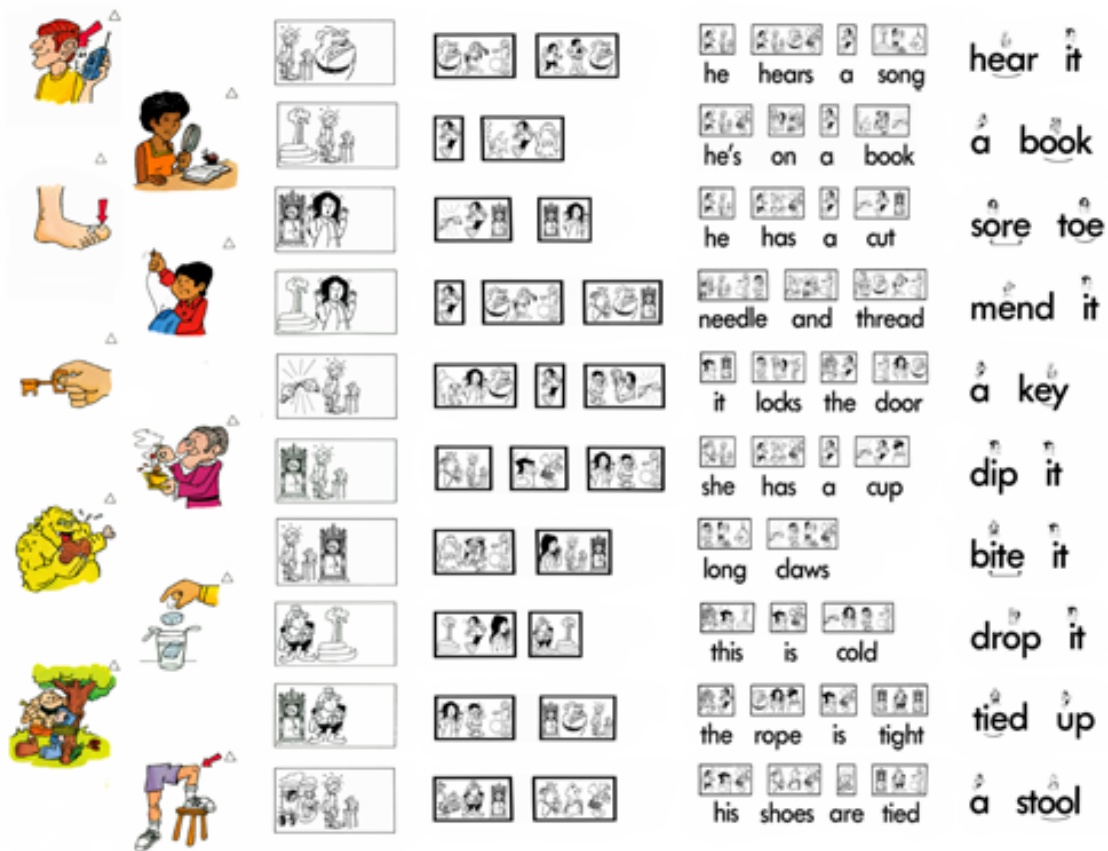


Picture Packets Station

The Picture Packets



The Picture Packets are a set of forty-four envelopes, thirty-eight of which contain sets of ten pictures. Eighteen sets of ten pictures at the two-sound level and twenty sets of ten pictures at the three-sound level.

Within both the two- and three-sound levels, the packets are broken into triangle, circle, square, rectangle, and star levels. The three-sound Picture Packets and words have a happy face added to their triangles, circles, squares, rectangles, and stars to distinguish three-sound activities from two-sound activities.

Children work in groups of twos and threes. Each group selects a Picture Packet at the appropriate level along with its corresponding Word Packet. The children spread the packet's ten pictures out and, with each other's help, match each word to its picture. Once the pictures and words have been matched, they are returned to their envelopes. The group then selects a new set of pictures and words, and the group's matching of words to pictures is repeated.

The Picture Packets contain 380 unique pictures. The Two and Three-Sound Flipbooks the teacher uses to introduce the children to the sounds and the sound-blending process will have introduced the children to 126 of the words represented by these pictures. This means that all the children already know 33% of the words in the Picture Packets.

The teacher does not need to check the picture-word matching. The children themselves will be able to tell if their matching is correct. They already know a third of the words, and they are collectively capable of figuring out the other 66%.

As students complete the two- and three-sound levels and move on to phrases, transition, and vowels-only levels, they use the same Picture Packets at each new level. The illustration at the beginning of this section shows a set of pictures and their matching words for the two-sound, phrases, transition, and vowels-only levels. Like the other four stations, the Picture Packet Station allows children to continue to learn alongside one another regardless of their current activity level.

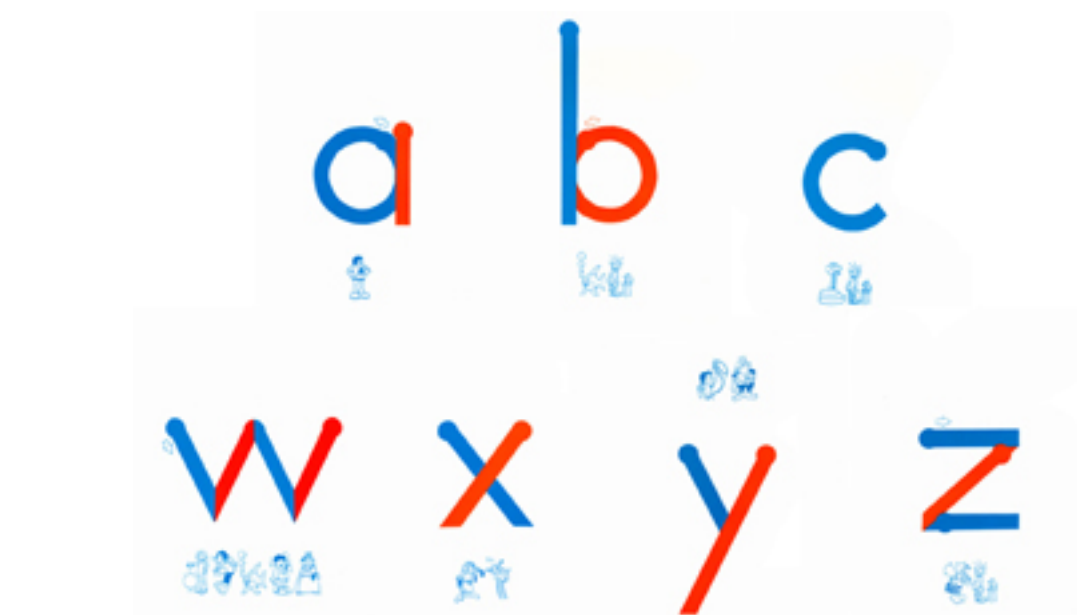
The Alphabet

At the start of this Picture Packets section, I said that Picture Packets are a set of forty-four envelopes, thirty-eight of which contain sets of ten pictures. That leaves six Picture Packets unaccounted for.

Twenty-five of the twenty-six letters of the alphabet are two-sound words. The only letter with more than two sounds in its name is the letter “W”. The red square, rectangle, and star Picture Packets contain twenty-five lower-case letters. The blue square, rectangle, and star Picture Packets contain twenty-five upper-case letters. Each Picture Packet contains ten pictures. Each Letter Packet contains ten letters, as well. The twenty-five letters become thirty by having the letters b, d, p, m, n appear twice at the star level.

As children reach the square, rectangle, and star levels for two-sound words, matching the names to both lowercase and uppercase letters is one of the activities that takes place at the Picture Packet station. No special letter-naming instructions are included with the introduction of the letter packets. The children who know the letter names teach the names to the few children who might not.

In addition, the teacher may already have placed the twenty-six Alphabet Wall Cards included in the Reading Program’s kit on the classroom wall. In the Alphabet Wall-Card image shown below, the five-sound letter W is included.



The Reading Program allows children to begin reading and writing before they even know the alphabet. That does not mean the alphabet is ignored. Letters are introduced from the Program's start. At the Handwriting and Decoding station, children learn to write each letter long before they begin matching letters to sounds.

Children learn to read and write with sounds. Once the sounds can be read with ease, children will connect these sounds to their letter-symbols. When that time comes, every child will have already become an expert letter writer.